



FMS-C70-BP

HIGH FLOW BOTTOM PORTED COALESCER

NFPA/T2/6/1
BURST & FATIGUE RATING

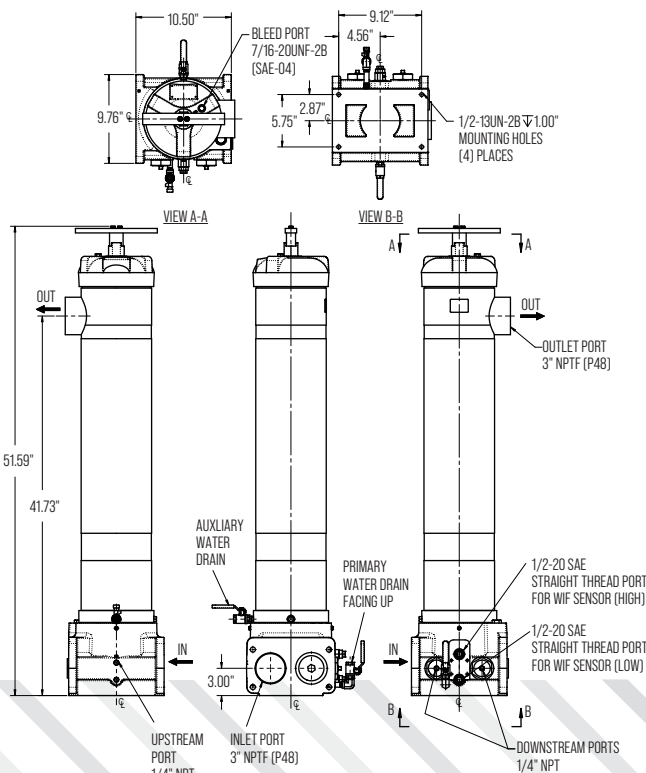
ISO 3968
Pressure Drop vs Flow

LESS WATER/EMULSIONS MORE HORSEPOWER

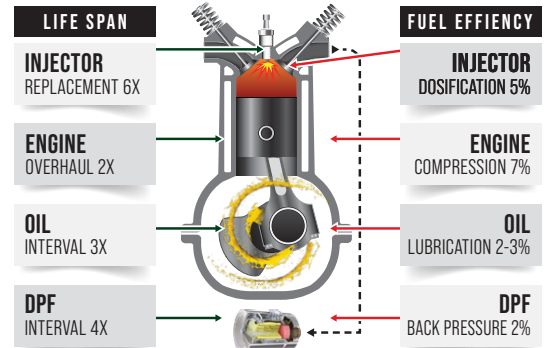
The FMS-C70-BP coalescing filter is the most effective method of removing water/emulsions from diesel fuel in high velocity flows, with 98.5% efficiency in one pass.

Water/emulsion contamination of diesel fuel causes loss of its calorific capacity and reduced lubricity, which means up to 15% loss of engine power and up to 15% increase in fuel consumption.

Any ISO 4406 contamination control plan must also include a solution to remove water/emulsions through SAE J1488 validated systems.



FMS FILTRATION BENEFITS



HOUSING TECHNICAL SPECIFICATIONS

Max. Flow per Housing	70 gpm
Porting	3" NPT
Additional Ports	2 x 1/4" NPT (US & DS)
Elements Options	FMS-C70-BPE
Max. Operating Pressure	100 psi (7 bar)
Min. Yield Pressure	400 psi (27.6 bar) without single gauge
Temperature Range	-20°F to 165°C (-29°C to 74°C)
Bypass Setting	30 psi (2 bar)
Porting Base	Anodized Aluminum
Element Case	Epoxy Paint w/High-phos Electroless Nickel Plating (Standard)
Cap	Nickel Coated Ductile Iron
Weight	155 lbs (77 kg)
Element Change Clearance	33.8" (858 mm)



FMS-C70-BPE

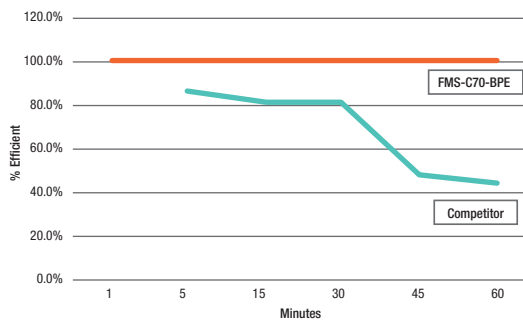
COALESCING FUEL FILTER

100% SYNTHETIC MEDIA

ULTRA DRY DELIVERY

It is well known that contamination will reduce the lifetime of your components and lubricants. FMS Filtering Systems has proven in the field to deliver Ultra-clean Ultra-dry diesel, under harsh operating conditions, in a single pass, resulting in maximum engine power with a perfect performance.

Today's high-pressure fuel injection systems have tighter tolerances and require efficient removal of contaminating water/emulsions. FMS ultra-filtration means optimal handling and control of water/emulsion contamination of diesel fuel, which is a must in modern engines, and should always be present in every good predictive maintenance practice.



As expert consultants, we at FMS evaluate your current condition and design a particles and water/emulsions contamination control strategy, according to your specific needs, to keep your operation within the optimum ISO 4406 standard with SAE J1488 certified systems.

ELEMENT TECHNICAL SPECIFICATIONS

Efficiency	98.6% SAE J1488 Certified
WHC	Drain
Maximum Flow	80 gpm
Recommended Flow	70 gpm
Dimensions	40x6x6"
Weight	18 lbs
Housings	FMS-C70-BP



←← WATER / EMULSIONS COALESCENCE REMOVAL



SCAN TO VISIT OUR WEBSITE



FMS INTERNATIONAL INC.

580 W Park Rd Leetsdale,
PA 15056
USA

+1 724 340 4210
info@fms-filtration.com
fms-filtration.com