

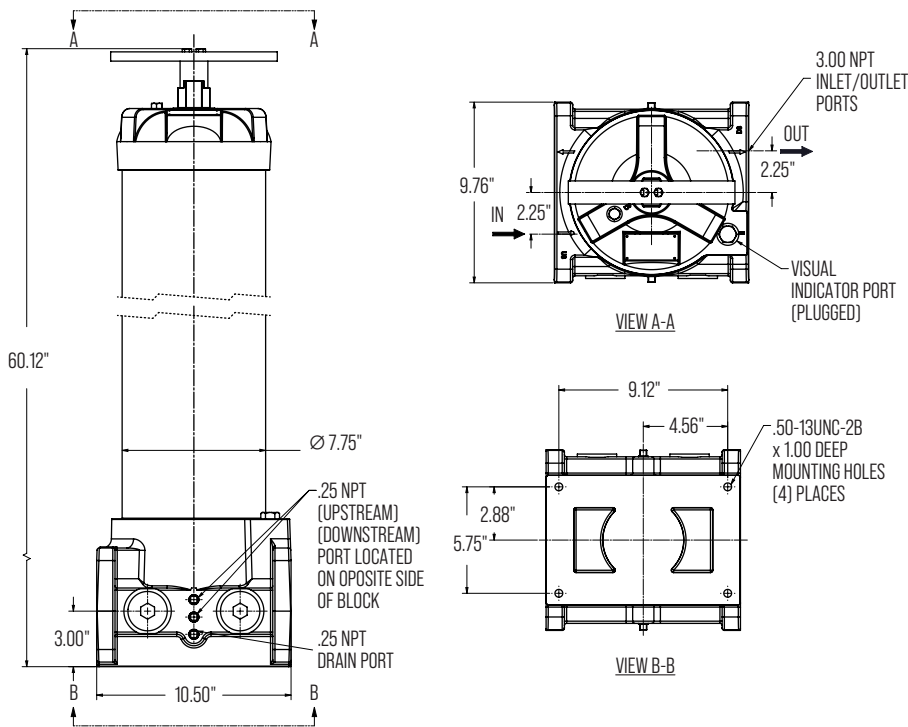


FILTER INSTALLATION

FMS-350-BP



- Define the fluid inlet and outlet ports.
- The fluid outlet is always/only through the lower port, opposite to the inlet.
- Install pressure gauges on US and DS ports; there is also an option for a port for a delta P indicator or a sensor with a connection to a light for saturation alarm.
- Screw the air purge button into the filter cap with a hose for drainage.
- Secure the filter using the holes/threads in its base.
- It is recommended to mount it on a safety/spill containment tray.
- Read the tolerances and do not exceed them (diagram); maximum recommended flow: 350 GPM.



HOUSING TECHNICAL SPECIFICATIONS

Max. Flow per Housing	350 gpm
Porting	3" NPT
Additional Ports	2 x test points, 2 x manometers, 1 x Delta P indicator (pop-up or sensor)
Elements Options	FMS-1/350-P
Max. Operating Pressure	500 psi (35 bar)
Min. Yield Pressure	2500 psi (172 bar)
Temperature Range	-20°F to 225° [-29°C to 107°C]
Bypass Setting	30 psi (40 psi optimal)
Porting Base	Cast Aluminum
Element Case	Steel
Cap	Ductile Iron
Weight	210 lbs
Element Change Clearance	36.8" (859 mm)



ELEMENT CHANGE INSTRUCTIONS

FMS-1/350-P



ELEMENT INSTALLATION

- Turn off the system to ensure there is no pressure or flow in the filter housing.
- Bleed the pressure from the filter using the purge plug on the filter cap.
- Drain the filter housing by removing the drain plug.
- Use an open-end wrench to loosen the threaded cap of the filter tube. Rotate the cap counterclockwise until it comes off the filter tube. (Note: the cap has a torque of 20 foot-pounds).
- Remove the contaminated element with a rotating motion of the filter head. Note that the spring plate and the spring are reusable.
- Inspect the O-ring on the cap and the backup ring, and replace them if necessary. (The part number for Buna N O-ring is LF-7363, Viton is LF-7363V, EPR is LF-7363B).
- Lubricate the seals of the element before placing the replacement element into the housing with system fluid.
- Replace the spring plate of the element and the spring at the top of the element.
- Carefully place the cap back over the newly installed element and position it onto the filter tube.
- Thread cap in clockwise manner until hand tight. Then open end wrench and tighten until cap bottoms out on filter tube and torque to 20 ft-lbs.
- Tighten the drain plug.
- Tighten the purge plug on the cap.

ELEMENT TECHNICAL SPECIFICATIONS

Efficiency	Beta 4-4193 (ISO 16889:99)
DHC	3000gr @300gpm (MTD)
	6000gr @75gpm
Maximum Pressure	150 psi
Recommended Flow	350 gpm
Dimensions	42x6.25x6.25"
Weight	21 lbs
Housings	FMS-350-BP



Reminder: When restarting the system, it is crucial to purge the filter housing by slightly loosening the purge plug to eliminate trapped air. This ensures that the filter housing is completely filled with system fluid and that the entire surface of the element is effective in removing contaminants.