



FMS-25-SP

POINT OF USE TOP PORTED

NFPA/T2/6/1
BURST & FATIGUE RATING

ISO 3968
Pressure Drop vs Flow

CONTAMINATION CONTROL AT DISPATCH

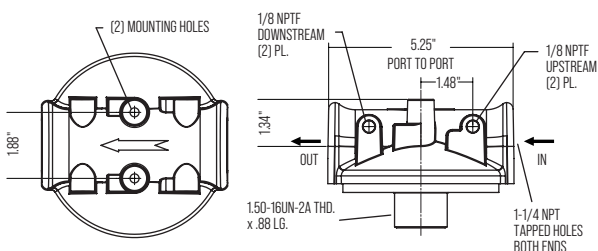
FMS Filtering Systems has proven in the field to deliver Ultra-clean Ultra-dry diesel with better than ISO 11/8/7 fuel cleanliness levels, under harsh operating conditions, in a single pass, resulting in maximum engine power with a perfect performance.

FMS ultra-filtration means optimal handling and control of particulate and water contamination of diesel fuel, which is a must in modern engines that handle very tight tolerances and very high injection pressures.

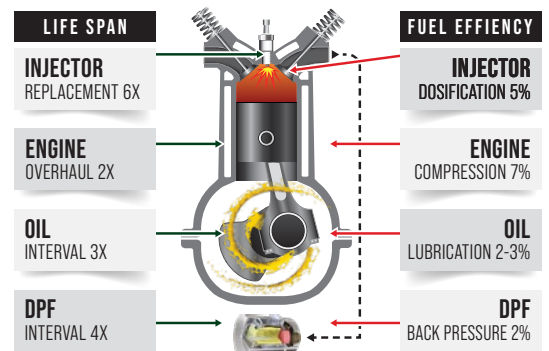
EFFICIENCY	TARGET ISO CLEANLINESS
Beta 4>4193	ISO 11/8/7

It is well known that contamination will reduce the life time of your components and lubricants, but the proper understanding of the relation between ISO certified fuel cleanliness and the life time of the components should always be the focus of a good predictive maintenance practice.

As expert consultants, we at FMS evaluate your current condition and design a contamination control strategy, according to your specific needs, to keep your operation within the optimum ISO 4406 standard.



FMS FILTRATION BENEFITS



HOUSING TECHNICAL SPECIFICATIONS

Max. Flow per Housing	25 gpm
Porting	1 1/4" NPT
Additional Ports	4 x 1/8" NPT (2 X US & 1 DS)
Elements Options	FMS-1/25-P (particulate) FMS-W25-A (absorbing)
Max. Operating Pressure	100 psi (7 bar)
Min. Yield Pressure	150 psi (10 bar)
Temperature Range	-20°F to 225° (-29°C to 107°C)
Bypass Setting	30 psi (2 bar)
Porting Base	Cast Aluminum
Element Case	Steel
Element Change Clearance	2.5" (65 mm)
Weight	5 lbs (2.3 kg)



FMS-1/25-P
POINT OF USE FUEL FILTER

FMS-W25-A
WATER ABSORBING FUEL FILTER

100% SYNTHETIC MEDIA

ULTRA CLEAN DELIVERY

DIRT REMOVAL



WATER ABSORBING

THETA 4>4310 SINGLE PASS TEST

	ISO CODES	PARTICLES		
		4 μm	6 μm	14 μm
Reservoir Contaminant Level	22/21/18	31898	14071	542
Average Cleanliness at Downstream	10/8/6	7.4	1.7	0.34

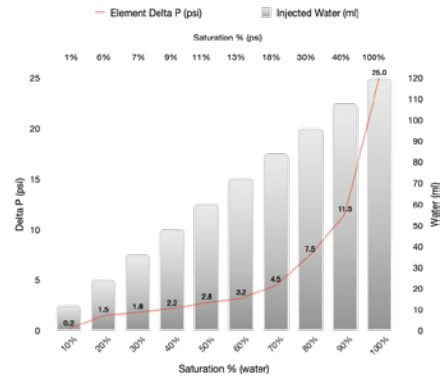
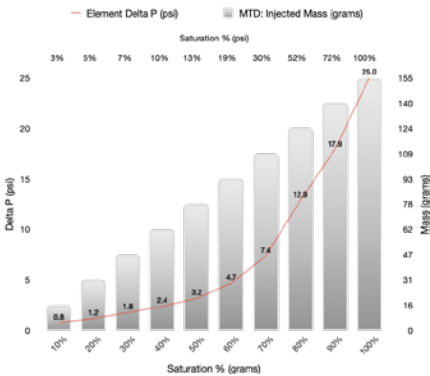
ELEMENT TECHNICAL SPECIFICATIONS

FMS-1/25-P

Efficiency	Beta 4>4193 (ISO 16889:99)
DHC	155 grams (MTD)
Max. Flow	50 gpm
Recommended Flow	25 gpm
Dimensions	10x5x5"
Weight	ND lbs
Housings	FMS-25-BP

FMS-W25-A

Efficiency	95%
WHC	1000 ml
Max. Flow	40 gpm
Recommended Flow	25 gpm
Dimensions	10x5x5"
Weight	ND lbs
Housings	FMS-25-BP



Contamination control at dispatch is a fundamental part of best practice. Our bottom-connected lockbox filters are the only ones that can be installed on the ridge of subway tanks and handle multiple dispensing guns.

Water and emulsions cause up to 15% of power loss, thus up to 15% increase in fuel consumption. All ISO 4406 contamination control plans must contemplate water and emulsions with SAE J1488 certified systems.



SCAN TO VISIT OUR WEBSITE



FMS INTERNATIONAL INC.

580 W Park Rd Leetsdale,
PA 15056
USA

+1 724 340 4210
info@fms-filtration.com
fms-filtration.com