



FMS-350-BP/S1

HIGH FLOW BOTTOM PORTED

FMS-C70-BP/S3

HIGH FLOW BOTTOM PORTED COALESCER

NFPA/T2/6/1
BURST & FATIGUE RATING

ISO 3968
Pressure Drop vs Flow

LESS
FUEL CONSUMPTION
MORE
HORSEPOWER

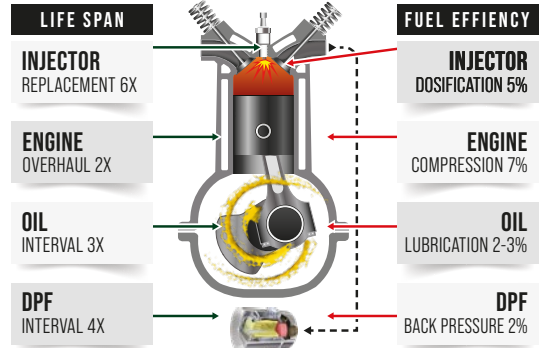
FMS Filtration Systems has proven in the field to deliver Ultra-clean Ultra-dry diesel with better than ISO 11/8/7 fuel cleanliness levels, under harsh operating conditions, in a single pass, resulting in maximum engine power with a perfect performance.

FMS ultra-filtration means optimal handling and control of particulate and water contamination of diesel fuel, which is a must in modern engines that handle very tight tolerances and very high injection pressures.

It is well known that contamination will reduce the life time of your components and lubricants, but the proper understanding of the relation between ISO certified fuel cleanliness and the life time of the components should always be the focus of a good predictive maintenance practice.



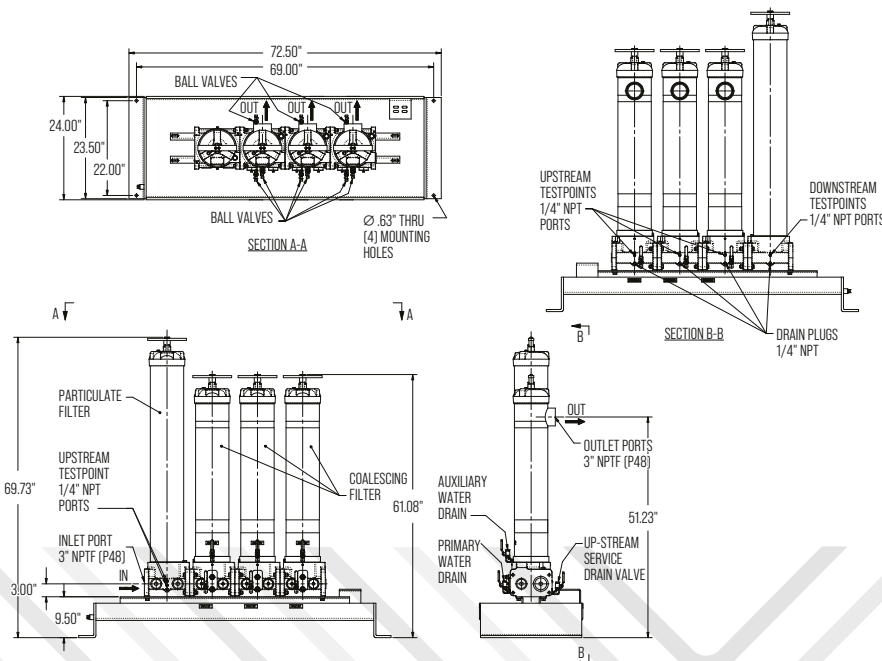
FMS FILTRATION BENEFITS



FMS-350-BP/S1-FMS-C70-BP/S3

HOUSING TECHNICAL SPECIFICATIONS

Max. Flow per Housing	Up to 210 gpm
Porting	3" NPT
Additional Ports	Particulate filter: 2x test points, 2x manometers, 1x Delta P indicator (pop-up or sensor) Coalescing filter: 2 x 1/4" NPT (US & DS)
Elements Options	FMS-1/350-P - FMS-C70-BPE
Max. Operating Pressure	100 psi (7 bar)
Min. Yield Pressure	400 psi (28 bar)
Temperature Range	-32°F to 165° (0°C to 74°C)
Bypass Setting	Particulate filter: 15 psi (1.03 bar) Coalescing filter: 25 psi (2 bar)
Porting Head	Anodize Aluminum
Element Case	Epoxy Paint w/High-phos Electroless Nickel Plating
Cap	Plated Steel
Weight	751 lbs
Element Change Clearance	33.8" (858 mm)





FMS-1/350-P
BULK FUEL FILTER

FMS-C70-BPE
COALESCING FUEL FILTER

100% SYNTHETIC MEDIA

ULTRA CLEAN AND DRY DELIVERY

FMS-1/350-P

FMS-C70-BPE



**RETENTION
OF PARTICLES**

ELEMENT TECHNICAL SPECIFICATIONS FMS-1/350-P

Efficiency	Beta 4>4193 (ISO 16889:99)
DHC	3000 grams (MTD)
Maximum Pressure	150 psi
Recommended Flow	350 gpm
Dimensions	42x6.25x6.25"
Weight	21 lbs
Housings	FMS-350-BP



**WATER / EMULSIONS
COALESCENCE REMOVAL**



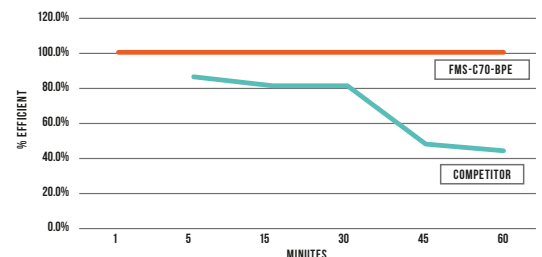
ELEMENT TECHNICAL SPECIFICATIONS FMS-C70-BPE

Efficiency	98.6% SAE J1488 Certified
DHC	Drain
Maximum Flow	80 gpm
Recommended Flow	70 gpm
Dimensions	40x6x6"
Weight	18 lbs
Housings	FMS-C70-BP

THETA 4>43 10 SINGLE PASS TEST

	ISO CODES	PARTICLES		
		4 µm	6 µm	14 µm
Reservoir Contaminant Level	22/21/18	31898	14071	542
Average Cleanliness at Downstream	10/8/6	7.4	1.7	0.34

Contamination control at dispatch is a fundamental part of best practice. Our bottom-connected lockbox filters are the only ones that can be installed on the ridge of subway tanks and handle multiple dispensing guns.



Water and emulsions cause up to 15% of power loss, thus up to 15% increase in fuel consumption. All ISO 4406 contamination control plans must contemplate water and emulsions with SAE J1488 certified systems.



SCAN TO VISIT OUR WEBSITE



FMS INTERNATIONAL INC.

580 W Park Rd Leetsdale,
PA 15056
USA

+1 724 340 4210
info@fms-filtration.com
fms-filtration.com