



# FMS-C25-TP

POINT OF USE COALESCING FILTER

NFPA/T2/6/1  
BURST & FATIGUE RATING

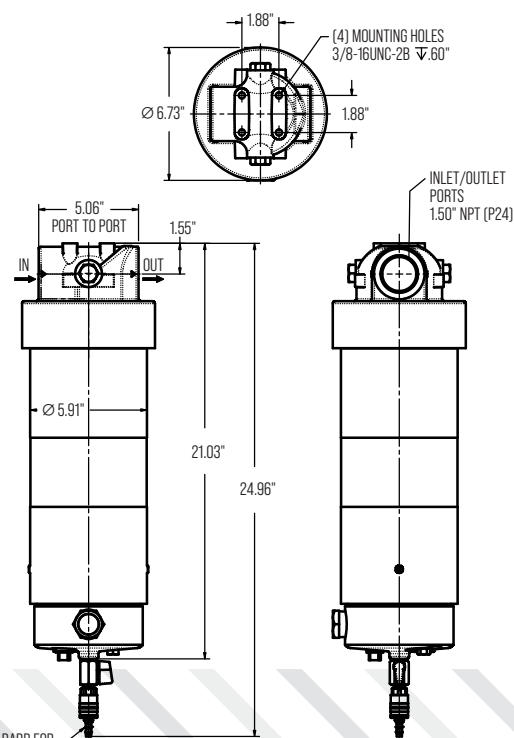
ISO 3968  
Pressure Drop vs Flow

# LESS WATER/EMULSIONS MORE HORSEPOWER

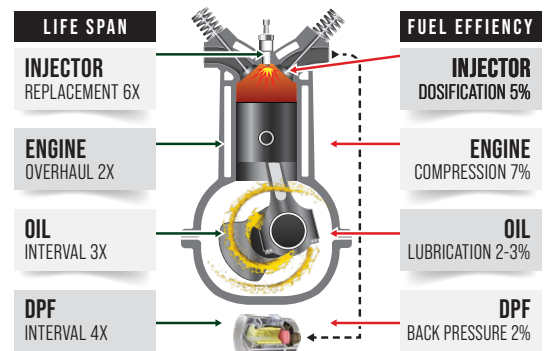
The FMS-C25-TP coalescing filter is the most effective method of removing water/emulsions from diesel fuel in high velocity flows, with 98.5% efficiency in one pass.

Water/emulsion contamination of diesel fuel causes loss of its calorific capacity and reduced lubricity, which means up to 15% loss of engine power and up to 15% increase in fuel consumption.

Any ISO 4406 contamination control plan must also include a solution to remove water/emulsions through SAE J1488 validated systems.



## FMS FILTRATION BENEFITS



## HOUSING TECHNICAL SPECIFICATIONS

Max. Flow per Housing	25 gpm
Porting	1 1/2" NPT
Additional Ports	Delta P for Pop-Up only
Elements Options	FMS-C25-TPE
Max. Operating Pressure	1189 psi (82 bar)
Flow Direction	Inside/Out
Temperature Range	-20°F to 225° (-29°C to 107°C)
Bypass Setting	40 psi (2.8 bar)
Porting Base	Cast Aluminum, Anodized
Element Case	Aluminum, Anodized
Sump	Cast Aluminum, Anodized
Weight	19.45 lbs (8.82 kg)
Element Change Clearance	4.5" (114 mm)



# FMS-C25-TPE

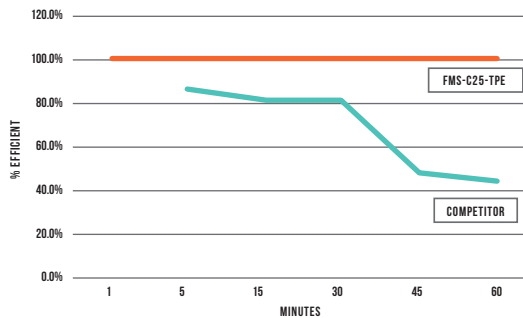
COALESCING FUEL FILTER

100% SYNTHETIC MEDIA

## ULTRA DRY DELIVERY

It is well known that contamination will reduce the lifetime of your components and lubricants. FMS Filtering Systems has proven in the field to deliver Ultra-clean Ultra-dry diesel, under harsh operating conditions, in a single pass, resulting in maximum engine power with a perfect performance.

Today's high-pressure fuel injection systems have tighter tolerances and require efficient removal of contaminating water/emulsions. FMS ultra-filtration means optimal handling and control of water/emulsion contamination of diesel fuel, which is a must in modern engines, and should always be present in every good predictive maintenance practice.



As expert consultants, we at FMS evaluate your current condition and design a particles and water/emulsions contamination control strategy, according to your specific needs, to keep your operation within the optimum ISO 4406 standard with SAE J1488 certified systems.

### ELEMENT TECHNICAL SPECIFICATIONS

Efficiency	95%
WHC	Drain
Maximum Flow	25 gpm
Recommended Flow	20 gpm
Dimensions	12x5x5"
Weight	ND lbs
Housings	FMS-C25-TP



### WATER / EMULSIONS COALESCENCE REMOVAL



SCAN TO VISIT OUR WEBSITE



FMS INTERNATIONAL INC.

580 W Park Rd Leetsdale, PA 15056 USA

+1 724 340 4210  
info@fms-filtration.com  
fms-filtration.com