



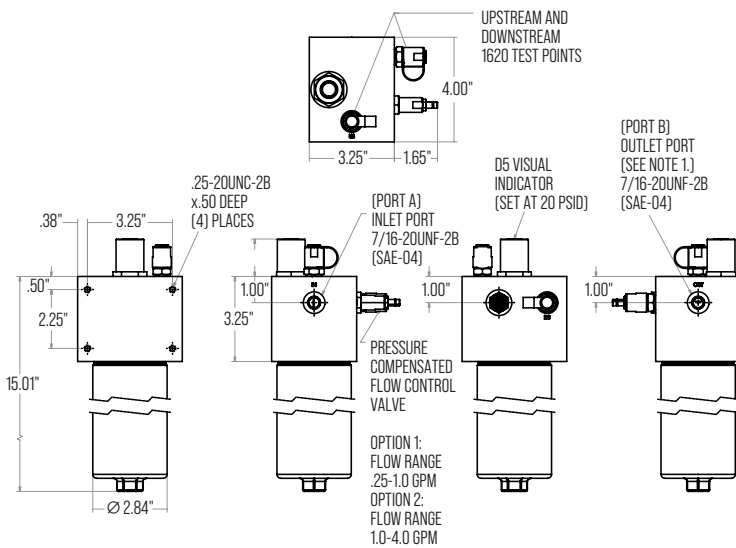
OPERATION MANUAL

FMS-3-TP

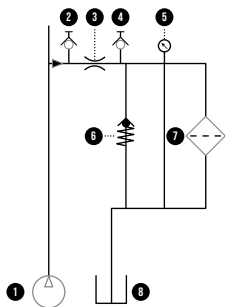


FILTER INSTALLATION

- Determine a constant pressure point between 40 to 3000 psi.
- Determine a direct return point to the hydraulic oil reservoir.
- Use hoses with a steel core, flanged that support 2X, maximum pressure of the connection point.
- Attach the filter using the holes/threads in the rear head of the filter.
- Connect the pressure hose to the inlet port marked IN.
- Connect the return hose to the reservoir (without pressure) in the port marked OUT.



HOUSING TECHNICAL SPECIFICATIONS	
Max. Flow per Housing	Up to 1 gpm (up to 3 gpm optional)
Porting	SAE-04
Testing ISO	US/DS 1620 Test points
Delta P	Pop-up indicator (sensor optional)
Pressure compensated flow control valve	0.1 - 1 gpm (3gpm optional)
Bypass Opening	25 psi (1.7 bar)
Elements Options	FMS-1.6-PA (particulate & absorbing)
Max. Operating Pressure	3000 psi (210 bar)
Min. Yield Pressure	Contact Factory
Temperature Range	-20°F to 225° (-29°C to 107°C)
Max. Hydraulic Oil Sump	100 gls
Porting Base	Aluminum
Element Case	Aluminum
Weight	6 lbs (2.2 kg)
Element Change Clearance	4.5" (115 mm)



- | | | |
|----------------------------------|---------------------------|----------------------------|
| 1. Pump (Max. Pressure 3000 psi) | 4. Test Point (Return DS) | 7. Filter |
| 2. Test Point (Pressure US) | 5. Delta P Indicator | 8. Reservoir (Tank Return) |
| 3. Valve (Flow Calibration) | 6. Bypass (25 psi) | |



ELEMENT CHANGE INSTRUCTIONS

FMS-1/6-PA



ELEMENT INSTALLATION: FMS-1/6-PA

- Shut down the system to ensure there is no pressure or flow in the filter housing.
- Rotate the bowl counterclockwise.
- Remove and discard the old/used element.
- Select the item you want to install.
- Install the element in the guide tube in the filter connection head and fit the bowl.

ELEMENT TECHNICAL SPECIFICATIONS

Efficiency	Beta 4>4193 (ISO 16889:99)
DHC	40gr @4gpm (MTD)
Maximum Flow	6 gpm
Recommended Flow	2 gpm
Dimensions	12x2.1x2.1"
Weight	0.3 lbs
Housings	FMS-3-TP