



SUGAR INDUSTRY




**PROTECT
YOUR ASSETS**

CASE STUDY



Pantaleon

THE CHALLENGE

- 
- ISO 22/21/18 contamination levels in diesel fuel were causing issues in the injection systems.
 - Engine oil analysis revealed a high rate of metal wear, elevated soot concentration, viscosity degradation, and a reduction in TBN and additive levels.
 - Frequent equipment shutdowns critically reduced the mill's productivity during peak harvest season.

THE DIESEL SOLUTION



Premium FMS® systems were implemented to effectively control particulate and water contamination, utilizing four barrier filters and two coalescing units.

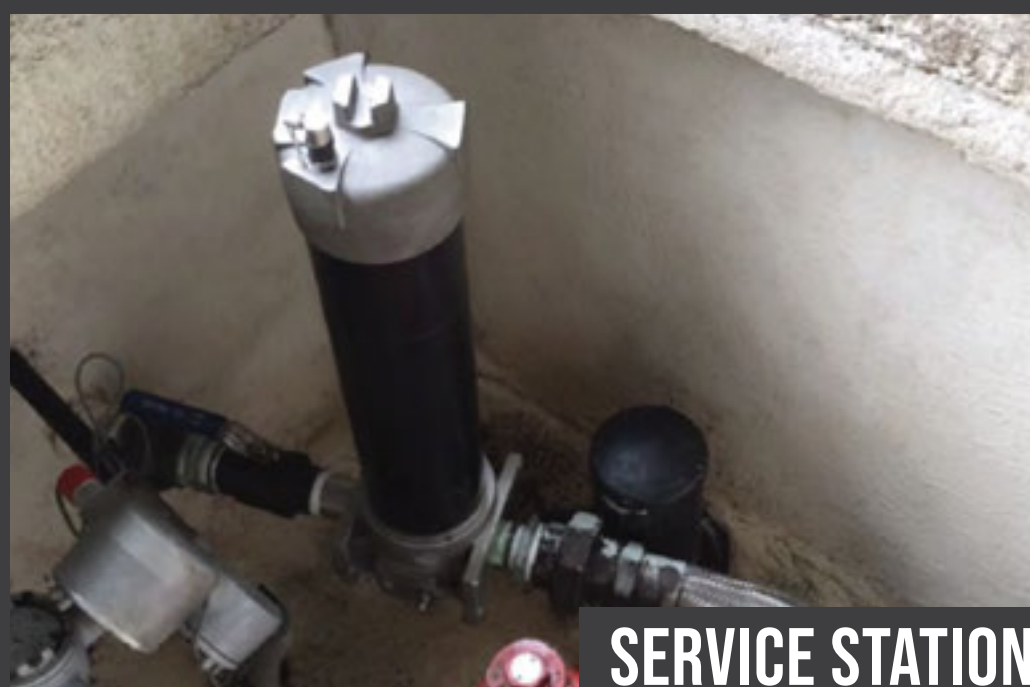
RESULT: ULTRA-CLEAN, DRY DIESEL – ISO 4406: 11/8/7.



RECEIVING



TANKER FILLING



SERVICE STATION



FIELD TANKERS

THE ENGINE OIL SOLUTION



Once diesel contamination was under control, bypass filters were implemented for engine oil in the mill's mobile units.

RESULT: ULTRA-CLEAN OIL ISO 4406: 16/14/12



DIESEL

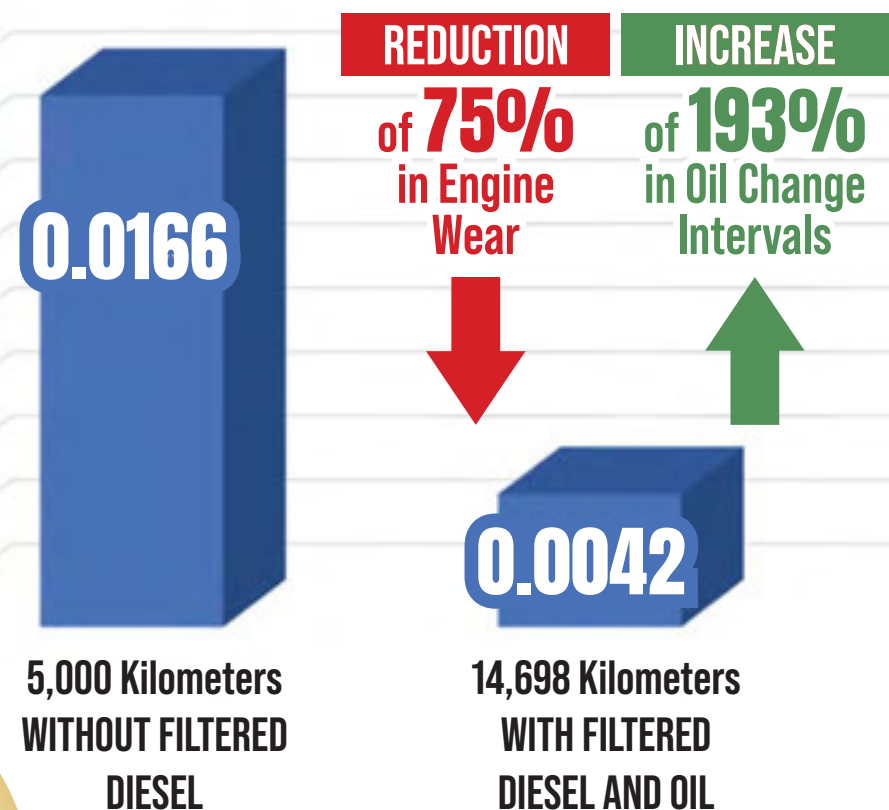


WATER/EMULSION CONTROL SAE J1488



ENGINE OIL

WEAR RATE PPM PER KILOMETER TRAVELED



UNIT 10060279



FMS[®] systems for diesel and engine oil are highly efficient at controlling contamination, helping us protect our machines, which is why I have recommended them to other companies in the Group in neighboring countries."

Pantaleon Guatemala

Book a meeting to discover how to effectively

PROTECT YOUR ASSETS



fms-filtration.com

**DOUBLE
GREEN** 
Economic and Environmental Benefits